



MONTHLY MEMBERSHIP PROGRESS REPORT

District 5 SW

Results as of: 05/31/2018

GMT: MICHAEL MOLEND

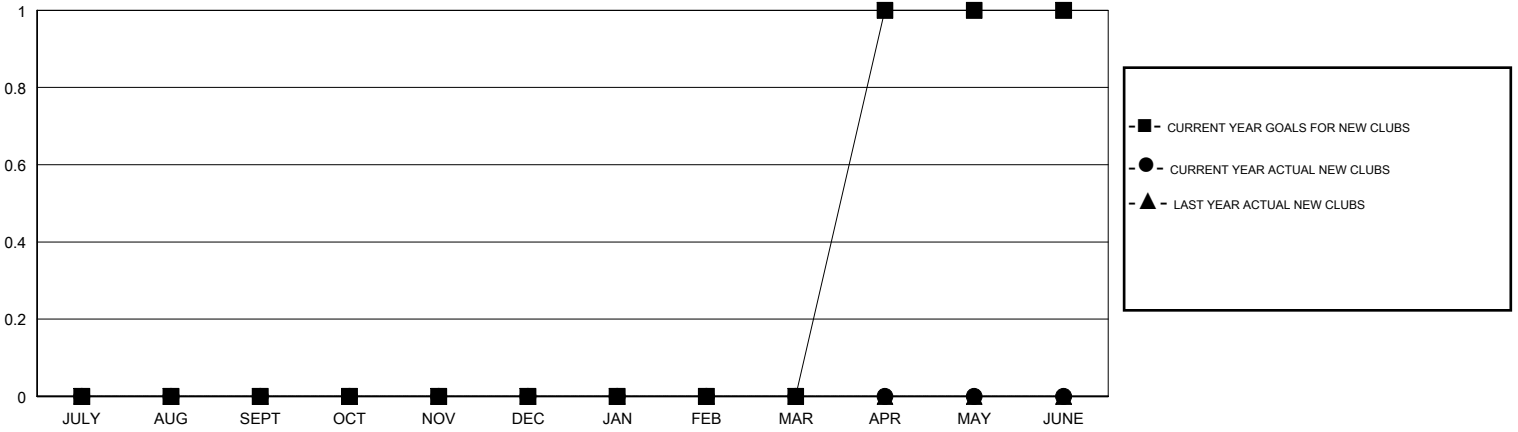
LOCATION SOUTH DAKOTA

GMT CA

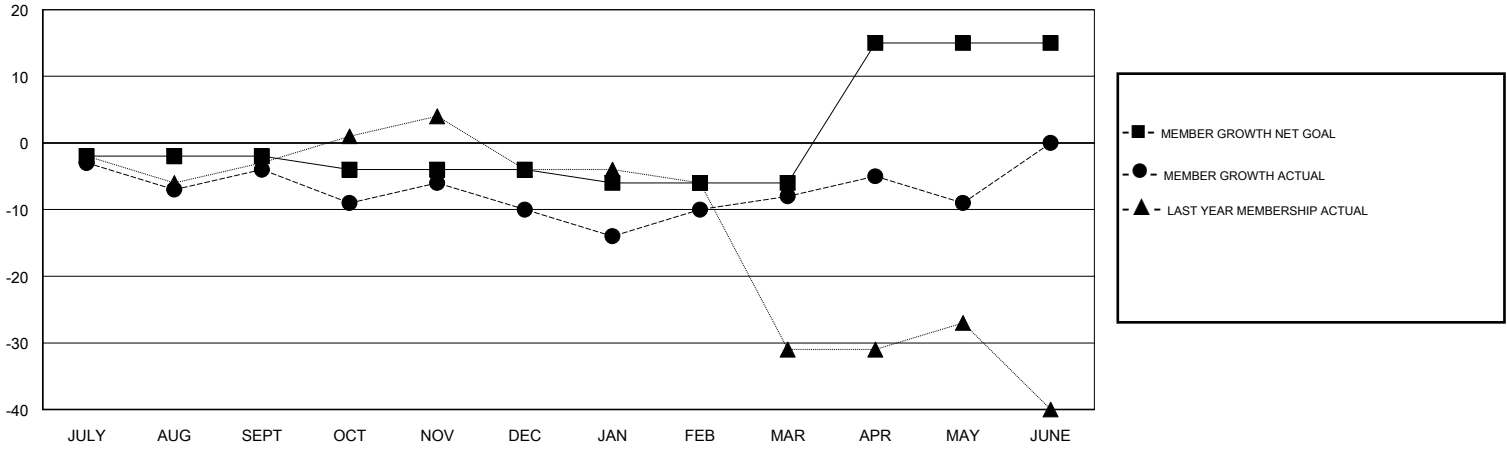
Clubs			
RESULTS FOR 2017-2018			
QUARTER	NEW CLUB GOAL	NEW CLUBS	DROPPED CLUBS
JULY/AUG/SEPT	0	0	0
OCT/NOV/DEC	0	0	0
JAN/FEB/MAR	0	0	0
APR/MAY/JUNE	1	0	0

Members			
RESULTS FOR 2017-2018			
QUARTER	MEMBER GROWTH NET GOAL	MEMBER GROWTH ACTUAL	DROPPED MEMBERS ACTUAL (including transfers)
JULY/AUG/SEPT	-2	15	18
OCT/NOV/DEC	-2	15	16
JAN/FEB/MAR	-2	13	11
APR/MAY/JUNE	21	11	11

GOALS AND ACTUAL NEW CLUBS CUMULATIVE



GOALS AND ACTUAL MEMBERS CUMULATIVE



DROPPED CLUBS: 0	20 CLUBS OF 33 ADDED 1 OR MORE NEW MEMBERS	<u>GENDER DISTRIBUTION</u> MALE 587 (72.65%) FEMALE 221 (27.35%) Women Percentage Fiscal Year Goal: 20%
<u>DROPPED MEMBERS</u> DECEASED 11 CLUB CANCELLED 0 OTHER 45 TOTAL 56	CLICK HERE FOR CUMULATIVE MEMBERSHIP DATA	TOTAL FAMILY UNIT MEMBERS 136 FAMILY MEMBERS PAYING HALF DUES 69